

Advancing Ocean Forecasting in the Russian Arctic: A Performance Analysis of MariNet Model in Comparison to FourCastNet and PhyDNet

A. V. Buinyi^{1,2}, D. A. Irishev¹, E. E. Nikulin¹, A. A. Evdokimov², P. G. Ilyushina², and N. A. Sukhikh^{1,2}

¹Marine Information Technologies llc.

²Lomonosov Moscow State University Marine Research Center (LMSU MRC).

Corresponding author: Aleksei V. Buinyi (a.buinyi@marine.tech)

Key Points:

- We developed a new data-driven model called MariNet for the short-term ocean state predictions.
- MariNet outperformed two other prominent data-driven forecasting models in accuracy and the carbon emissions rate on the training phase.
- Data-driven models can complement physics-based models for marine forecasting. They provide advantages in accuracy and cost-effectiveness.

Abstract

Marine forecasts are essential for safe navigation, efficient offshore operations, coastal management, and research, especially in areas with a such harsh conditions as the Arctic Ocean. They require accurate predictions of ocean currents, wind-driven waves, and other oceanic parameters. However, physics-based numerical models, while precise, are computationally demanding. Consequently, data-driven methods, which are less resource-intensive, may offer a more efficient solution for sea state forecasting. This paper presents an analysis and comparison of three data-driven models: our newly developed convLSTM-based MariNet, FourCastNet and the PhydNet, a physics-informed model for video prediction. Using metrics such as RMSE, Bias and Correlation, we demonstrate the areas where our model surpasses the performance of the prominent prediction models. Our model achieves improved accuracy in forecasting ocean dynamics compared to FourCastNet and PhydNet. We also find that our model requires significantly less training data, computing power, and consequently provides less carbon emissions. The results suggest that data-driven models should be further explored as a complement to physics-based models for operational marine forecasting. They have the potential to enhance prediction accuracy and efficiency, enabling more responsive and cost-effective forecasting systems.

Plain Language Summary

Accurate forecasts of conditions like winds, waves, and currents are important for safe ocean travel and coastal management, especially in harsh areas like the Arctic. Complex physics-based computer models can make good forecasts, but take a lot of computing power. We developed a new artificial neural network called MariNet that makes forecasts directly from data, which uses less resources. We tested MariNet against two other prominent data-driven models. MariNet was more accurate at predicting ocean conditions, needed less computing power, and produced less carbon emissions. Overall, AI systems like MariNet complement physics-based models and have advantages in efficiency and responsiveness. They should be explored further to enhance marine forecasts in a cost-effective way, enabling better decisions on the oceans.

1 Introduction

Machine Learning is the process of making computer systems learn without explicit instructions by analyzing and drawing inferences from data patterns using algorithms and statistical models. One of the major limitations of Artificial Intelligence and Machine Learning has always been computational power, which has been a cause of concern for researchers. CPUs were not as powerful and efficient a few decades ago when it came to running large computations for machine learning. Hardware manufacturers have worked hard to create a processing unit capable of performing any AI operation.

Though CPUs are no longer viable sources of computational power, they were the pioneers. Today, those CPUs are rightfully replaced by GPUs and AI accelerators, specifically designed for large computing. The main features considered while purchasing an AI accelerator are cost, energy consumption, and processing speed.

The study of ocean circulation is crucial for many reasons, including the climate research, determining marine life distribution, shaping human activity, and more. Accurate prediction of currents can help forecast weather, estimate energy transfer rates in the ocean, predict the spread of oil spills and drift of the sea ice and icebergs. Sediment transport is another important correlated aspect correlated with the water circulation, affecting marine economic activities such

as fishing, transport, logistics, and tourism. Therefore, in the seas, especially in the high latitudes, the prediction of currents is crucial for port, pipeline, and logistics development, as well as for the analysis of sea ice drift for safe logistics. In this context, the development of a machine learning model for the prediction of sea water movement and sea level variations is essential.

Sea currents and sea surface level prediction have a long history of development, starting with traditional empirical methods and evolving into modern AI methodologies. The early efforts held in the 17th -19th centuries (e.g. Halley, 1686; Maury, 1855) and relied on accidental in situ observations. With the transition from single observations to systematic measurements, the emergence of scientists specializing in hydrodynamics and ocean studies, the development of a network of observation stations and scientific equipment, analytical methods of describing observed phenomena were formed in (Navier, 1822; Stokes, 1845) and numerically solved in (V. Bjerknes, 2023; Vilhelm Bjerknes, 1903). In the early 20th century, V. Walfrid Ekman's research on wind-driven surface currents laid important groundwork for understanding ocean transport mechanisms. It laid the foundation of geophysical fluid dynamics and led to the pioneering work of numerical weather forecasting of (Richardson, 1922). The first numerical forecasts in oceanography were developed for the wind-driven waves by (Sverdrup & Munk, 1947). Development of numerical methods based on solving the Navier-Stokes equations continued in the ocean simulations with the first models (Bryan, 1969) and succeeded in mesoscale ocean circulation forecasting by 1983 (A. R. Robinson, 1983). Over time, increased computational power and improved mathematical representations of ocean processes have enabled more sophisticated forecasting models. The satellite remote sensing era, that began nearly at the same time, provided massive volume of data for observing and assimilating sea surface height data into models.

All it made the global ocean reanalysis and forecasting projects available. Operational forecasting centers like the European Centre for Medium-Range Weather Forecasts (ECMWF) and the National Oceanic and Atmospheric Administration (NOAA) began running global ocean prediction systems to support weather, climate and marine applications (Storto et al., 2019), while regional models with finer resolutions also emerged for areas like the Arctic (Chen et al., 2009).

With the availability of petabytes of oceanographic and remote sensing observations, with the outputs of numerical model simulations, with the growth of computational power, artificial intelligence (AI) tools are increasingly being leveraged in a variety of applications in oceanography (Dong et al., 2022). The high energy efficiency of the AI models (e.g. (Pathak et al., 2022)) also contributes to their spreading.

Various AI algorithms are now being used for the identification of mesoscale eddies (Du et al., 2019; Duo et al., 2019; Franz et al., 2018; Lguensat et al., 2018; Santana et al., 2020; Xu et al., 2019, 2021), forecasting surface waves (Buinyi et al., 2022; Fan et al., 2020; Gao et al., 2021; Mandal & Prabakaran, 2006; Zhou et al., 2021), prediction of features, like the Indian Ocean Dipole, with a multi-task deep learning model in (Ling et al., 2022), that outperformed traditional numerical multiseasonal prediction.

The topics of sea surface heights and currents forecasting are also covered with the AI methods. One approach is the use of deep learning methods such as ConvLSTMP3, which extracts spatial-temporal features of sea surface heights using convolutional operations and long short-term memory (LSTM) (Song et al., 2021). One more paper (Zulfa et al., 2021) uses LSTM to predict sea surface velocity and direction, achieving good results with low Mean Absolute

Percentage Error (MAPE) values in Labuan Bajo waters. In the paper (Ning et al., 2021) an optimized Simple Recurrent Unit (SRU) deep network was developed for short-to-medium-term sea surface height prediction with AVISO data.

There are a lot of promising results in geosciences now. We have created MariNet, the ML architecture, and compared its output with two state-of-art ML models of different architectures to test their ability in the Arctic region forecasting. In the current work, we test the algorithms on the surface currents data and sea surface heights.

2 Materials and Methods

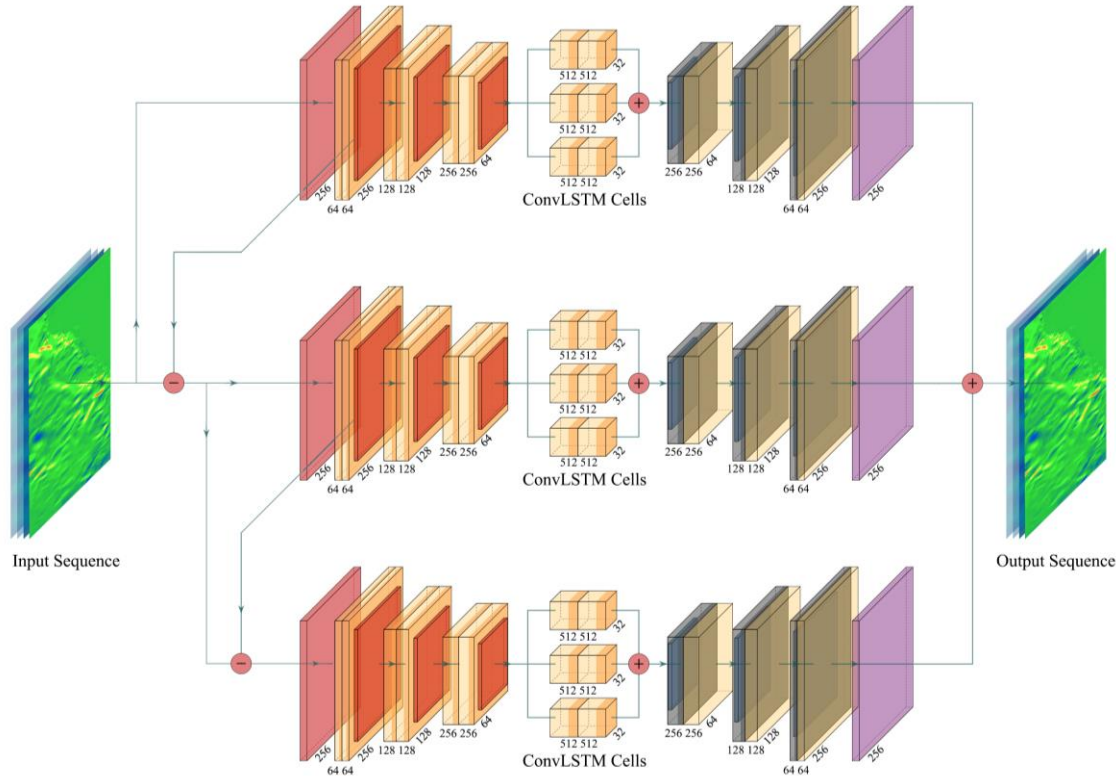
In the initial stages of our research, we harnessed PhyDNet and FourCastNet, two of the most promising machine learning architectures applicable to the ocean state forecasting available at the time, for the comparison with MariNet, our Neural Network. The neural networks are described below.

2.1 MariNet neural network

MariNet is an artificial neural network (ANN) based on the parallel encoder-decoder architecture within which ConvLSTM modules are embedded in latent space (Buinyi et al., 2023). The ConvLSTM itself is introduced by (Shi et al., 2015) and described as a type of neural network architecture that combines convolutional and LSTM layers. Due to the successful architecture design it is used for spatiotemporal data analysis and prediction, such as a precipitation nowcasting (Shi et al., 2015), a temperature (Lin et al., 2019) or flood (Moishin et al., 2021) forecasting, predicting the arctic sea ice concentration (Liu et al., 2021) and seismic events (Fuentes et al., 2021) with relatively high reliability.

The architecture of our model is shown on the Figure 1. MariNet consists of several interconnected encoder-decoder blocks, within which ConvLSTM modules are embedded between the encoder and the decoder. Each ConvLSTM module contains several parallel ConvLSTM cells connected in such a way that the sum of their outputs forms the resulting forecast of time series in the latent space. This design allows the neural network to simultaneously detect temporal dependencies at various frequencies without assumptions about frequency distribution and a priori defined data distributions.

134



135

136 Figure 1. The architecture of MariNet

137 The encoder-decoder blocks are interconnected in such a way that the input to each
 138 subsequent block is the result of subtracting the original data from the original data passed
 139 through the first convolutional layer in the block, which produces average pooling. Moreover,
 140 the size of the convolution in the first layer of the block varies for each block. This solution helps
 141 to hierarchically highlight patterns in images: first, the neural network is trained to work with
 142 larger patterns. Then it analyzes smaller patterns and their conditional dependencies on larger
 143 ones.

144 A key feature of the model's operation is the forecasting algorithm. Here, we don't use a
 145 typical recursive algorithm, where the forecast from the previous step is cyclically fed into the
 146 neural network to form a forecast for the next steps. Our neural network sequentially receives
 147 several previous values for the water velocity and sea surface heights. Therefore, instead of
 148 getting a single array for one time point, our neural network is initialized by the dynamics of
 149 such arrays, which allows for a more accurate assessment of the state of the forecasted values,
 150 and consequently, ensures a more precise forecast.

151 2.2 Phydnet neural network

152 PhydNet is a deep learning model introduced in (Le Guen & Thome, 2020) and designed
 153 for unsupervised video prediction. Due to its architecture, the model integrates physical
 154 knowledge into the learning process, making it effective for tasks such as weather forecasting,
 155 fluid dynamics, and other physical phenomena prediction. The model leverages physical
 156 knowledge on dynamics and disentangles it from other unknown factors. To achieve this goal,

authors introduced a PhyDNet disentangling architecture, and PhyCell physically-constrained recurrent cell. The recurrent block projects input video frames into a latent space. This projection is achieved through a deep convolutional encoder, which transforms the input video into a lower-dimensional representation. The latent space is where the disentanglement of physical dynamics and residual information occurs. Two parallel neural networks are responsible for it: PhyCell and ConvLSTM. PhyCell is a recurrent cell that models and solves Partial Differential Equations (PDE) with internal physical predictor computing and combining partial derivatives with convolutions. PhyCell allows exploiting prior physical knowledge to improve prediction of a model, add explainability and leverages physical constraints to limit the number of model parameters. The ConvLSTM network is trained to learn the residuals, or errors, of the physical model's predictions. By learning these residuals, the network can correct the physical model's predictions and improve the overall accuracy of the system. Learned physical and residual representations are summed before decoding to predict the future video frame. As a result, PhyDNet generates one-step-ahead prediction that can be extended by recursive feeding predicted frame into the model. It's important to note that predictions are reinjected as the next input only for the ConvLSTM branch, and not for PhyCell. This is because the PhyCell is designed to capture the deterministic physical dynamics, which should not be influenced by the predictions.

In (Le Guen & Thome, 2020) PhyDNet has been compared with PredRNN, ConvLSTM, Causal LSTM, Memory in Memory (MIM), outperformed them and showed itself as one of the state-of-the-art model of its time. Therefore, we have chosen PhyDNet to compare with our model.

2.3 FourCastNet neural network

FourCastNet, or Fourier ForeCasting Neural Network is first described in (Pathak et al., 2022). It is a data-driven global weather forecasting model that provides short to medium range predictions. It is trained with an ERA5 reanalysis from the European Centre for Medium-Range Weather Forecasts (ECMWF), which has hourly estimates of atmospheric variables at a 0.25° resolution. FourCastNet utilizes a Fourier transform-based token-mixing scheme (Guibas et al., 2021) which is complemented with a vision transformer (ViT) backbone (Dosovitskiy et al., 2021). This method is grounded in the recent advancements in the Fourier neural operator, or Adaptive Fourier Neural Operator (AFNO) that has demonstrated success in modeling challenging partial differential equations (PDE), including fluid dynamics, in a resolution-invariant manner (Li et al., 2020).

According to (Pathak et al., 2022) the use of ViT backbone is preferred due to its ability to effectively model long-range dependencies. The combination of ViT and Fourier-based token mixing produces a high-resolution model that effectively resolves fine-grained features and scales well with the size and resolution of the dataset, leading to the training of high-fidelity data-driven models at an unprecedented resolution.

The original version of FourCastNet models 20 variables at five vertical levels, that are: surface air pressure, mean sea level pressure, air temperature at 2m from the surface, zonal and meridional wind velocity 10m from the surface; zonal and meridional wind velocity at 1000, 850, and 500 hPa; air temperature at 850 and 500 hPa; geopotential at 1000, 850, 500, and 50hPa; relative humidity at 850 and 500hPa, and Total Column Water Vapor. Authors use the model to predict such variables as the surface wind speed, precipitation, and atmospheric water vapor. They propose FourCastNet to be implied for planning wind energy resources, predicting

extreme weather events such as tropical cyclones, extra-tropical cyclones, and atmospheric rivers. FourCastNet matches the forecasting accuracy of the ECMWF Integrated Forecasting System (IFS), a state-of-the-art Numerical Weather Prediction (NWP) model, at short lead times for large-scale variables, while outperforming IFS for small-scale variables, including precipitation.

According to (Pathak et al., 2022), the FourCastNet uses such metrics as Root Mean Squared Error (RMSE), Anomaly Correlation Coefficient (ACC) at lead times of up to three days and gives results comparable to the ECMWF Integrated Forecasting System (IFS), one of the best to the moment classical numerical model used by ECMWF to construct reanalyses and make weather forecasts.

2.4 Metrics for the model output quality estimation

We trained all three networks with the data on the surface water currents and the sea surface heights, started the inferences and compared their outputs with several metrics: Root Mean Squares Error (RMSE), Bias and Correlation. They are defined as:

$$RMSE = \sqrt{\frac{1}{N} \sum_{i=1}^N (y_i - x_i)^2},$$

$$Bias = \frac{1}{N} \sum_{i=1}^N y_i - \frac{1}{N} \sum_{i=1}^N x_i,$$

$$Correlation = \frac{S_{xy}}{\sqrt{S_{xx}S_{yy}}}, \text{ with}$$

$$S_{xy} = \sum_{i=1}^N x_i y_i - \frac{\sum_{i=1}^N x_i \sum_{i=1}^N y_i}{N},$$

$$S_{xx} = \sum_{i=1}^N x_i^2 - \frac{(\sum_{i=1}^N x_i)^2}{N},$$

$$S_{yy} = \sum_{i=1}^N y_i^2 - \frac{(\sum_{i=1}^N y_i)^2}{N},$$

where x_i is the original data value for a given timestep, y_i is a predicted value for a given timestep, N – the length of the timeseries.

In scholarly terms, the Root Mean Square Error (RMSE) quantifies the divergence in magnitude between the model's predictions and the actual observations. It is preferable for the RMSE to be smaller as this signifies a better alignment between predicted and actual values.

Bias, on the other hand, signifies the systematic deviation of the approximated quantifier from the real value and can be interpreted as a consistent overestimation or underestimation of an output. It is desirable for the bias to be closer to zero, indicating that the estimates are nearer to the actual data.

The correlation, in contrast, is a statistical measure that sheds light on the degree to which two variables share a linear relationship. This relationship is frequently deployed to depict the linear association between two contingent factors. Greater values of correlation denote a stronger relationship between the two variables.

3 Data

The Copernicus Marine Environment Monitoring Service (CMEMS) offers a comprehensive global ocean analysis and forecast system through its Global Ocean Physics Analysis and Forecast (CMEMS-GLO-PUM-001-024) product. The system operates at a high-

resolution scale of $1/12^\circ$, updated daily, and provides global ocean forecasts for a 10-day period (Operational Mercator Global Ocean System). The dataset employs a combination of the numerical ocean model NEMO 3.6 with LIM3 Multi-categories sea ice model, ECMWF IFS HRES atmospheric forcing, and several data assimilation techniques, like SAM2 (SEEK Kernel) 4D, allowing for seamless integration of in-situ and satellite observations.

For our needs we choose the region bounded by 60°N - 90°N and 5°E - 150°W and obtain the hourly surface data of zonal sea water velocity (u), meridional sea water velocity (v), and sea surface height above geoid (zos) for 2019-2022. We interpolate them to the 6-hour temporal resolution and $0.25^\circ \times 0.25^\circ$ spatial resolution and feed the data to the ML models.

4 Results

MariNet model shows promising results. The figures representing metrics of FourCastNet model have artifacts. The average metrics are shown in Table 1. According to the table, MariNet model has minimal RMSEs for the sea surface heights and components of surface sea water velocities. The bias of the MariNet model is also the closest to zero among the mentioned models. Mean correlation between models in average is not significantly high. Nevertheless, the PhyDNet and MariNet demonstrate here the highest correlation, that is about 0.5 for the sea surface velocities and 0.4 for the sea surface heights.

Table 1
Metrics of MariNet, FourCastNet and PhyDNet for zonal and meridional components of surface water velocities and Sea Surface Heights

	Model	RMSE (m/s)	Bias (m/s)	Correlation
u	MariNet	0.027	-0.001	0.507
	FourCastNet	0.051	0.003	0.432
	PhyDNet	0.043	0.004	0.519
v	MariNet	0.028	0	0.515
	FourCastNet	0.051	0.002	0.428
	PhyDNet	0.044	0	0.524
ssh	MariNet	0.027	-0.001	0.430
	FourCastNet	0.082	-0.050	0.367
	PhyDNet	0.046	0.003	0.451

Figure 3 demonstrates the temporal evolution of the RMSE for the sea surface velocity and the sea surface heights for the chosen models through the prediction time. As we see, all RMSEs monotonically grow. According to the plots, MariNet and PhyDNet demonstrate close results, their RMSEs grow from the 0.01 m/s and 0.01 m to about 0.04 m/s and 0.045 m for sea water velocity and sea surface heights respectively.

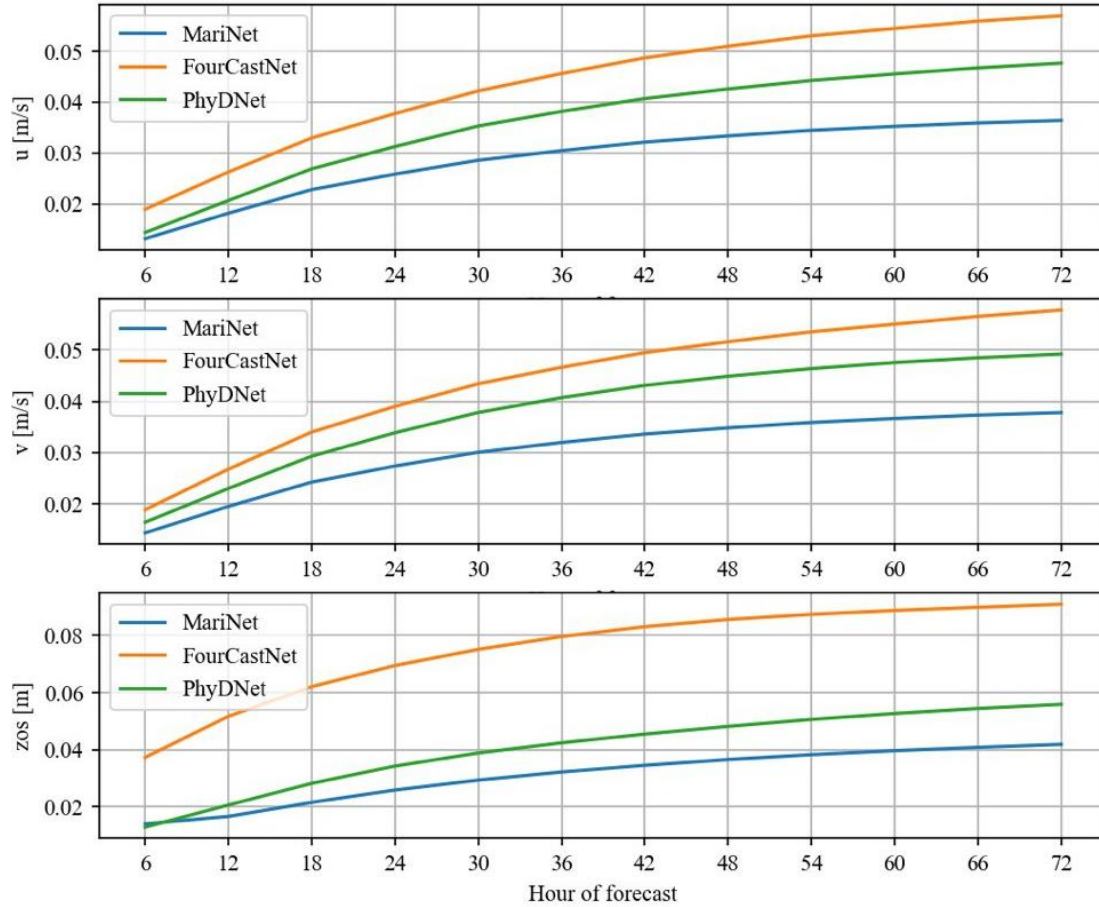


Figure 2. Plots of temporal evolution of RMSE for Zonal (upper image), Meridional (middle image) Components of Surface Water Velocity (m/s), and the Sea Surface Heights (m) above geoid for MariNet (blue line), PhyDNet (green line), and FourCastNet (orange line) models.

Figures 3-5 show maps of RMSE for zonal components of surface water velocity for the research area. All three models have similar spatial distribution of RMSEs, with the high values in the areas with more active ocean circulation and the low values in the eastern offshore areas. In average, MariNet results with a twice less RMSE compared with other two neural networks.

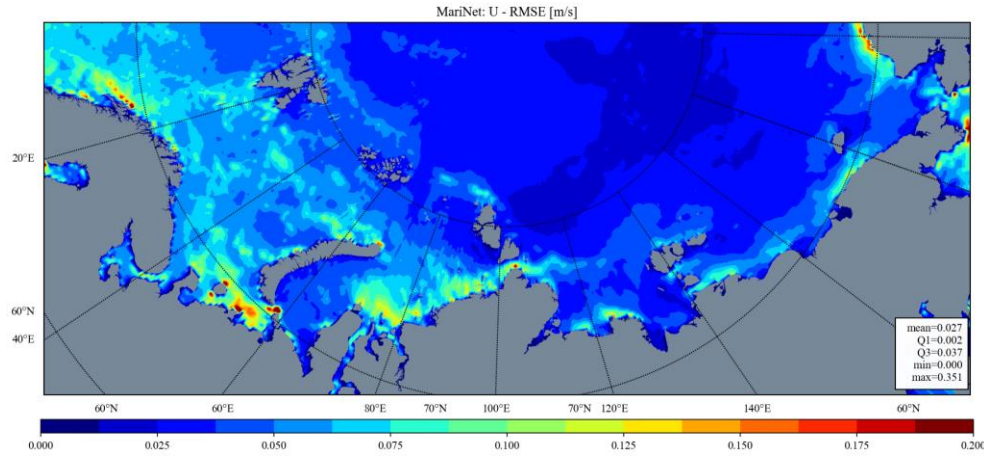


Figure 3. RMSE (in m/s) for Zonal Component of the Surface Water Velocity for MariNet model

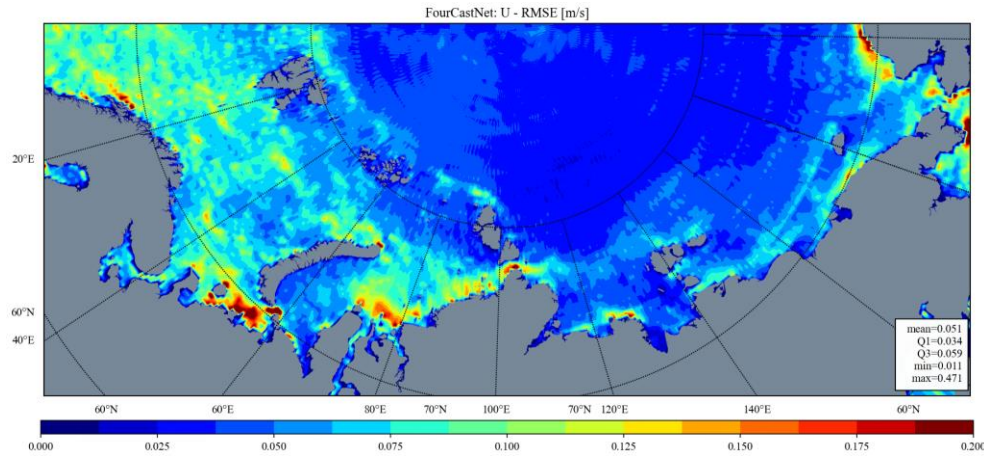


Figure 4. RMSE (in m/s) for Zonal Component of the Surface Water Velocity for FourCastNet model

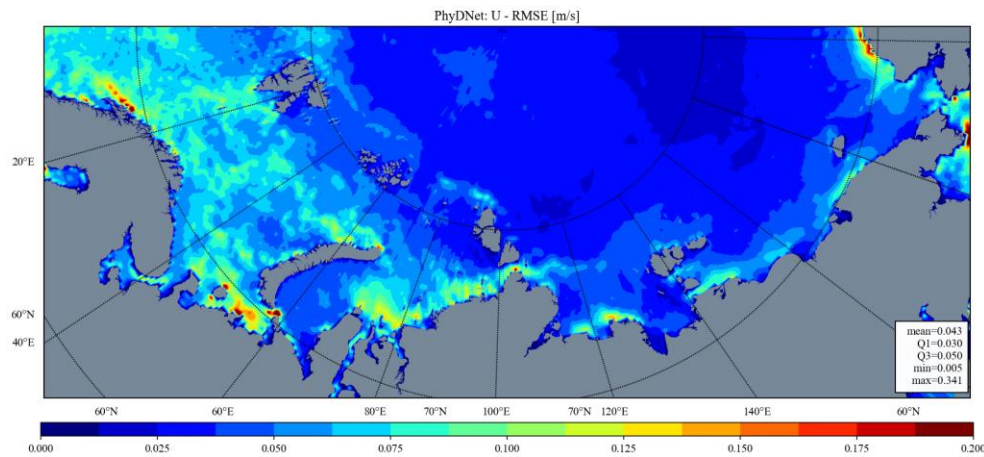


Figure 5. RMSE (in m/s) for Zonal Component of the Surface Water Velocity for PhyDNet model

Computational Cost of MariNet

With the CodeCarbon software package, we have calculated the carbon emissions and the energy consumption of the MariNet, FourCastNet and the PhyDNet for our calculations. Results are shown in the Table 2. Training of the MariNet model has the least carbon emission rate, but, due to the relatively large time of training, it takes the most energy. At the same time, PhyDNet wins the energy consumption and the emission rate challenges.

Table 2
Comparison of the carbon emissions and energy consumption during the models training and inference

	Model Training			Model Inference		
	Emissions Rate (g/s)	Energy Consumed (kW)	Time (hrs)	Emissions Rate (g/s)	Energy Consumed (W)	Time (sec)
FourCastNet	0.100	103.356	103.30	0.104	0.431	1.997
PhyDNet	0.116	103.734	119.06	0.02353	0.001097	0.0224
MariNet	0.083	214.788	257.90	0.0908	0.0973	0.515

5 Conclusions

In the study, we proposed a forecast model MariNet model, based on the encoder-decoder architecture, and compared it with FourCastNet and PhyDNet, the most promising ML models in the field weater prediction of their time. We have chosen the Arctic region, one of the hottest spots of the modern climate science research and obtained the hourly data on zonal and meridional velocities of the surface sea water and sea surface heights above geoid from the Copernicus Marine Data Store. We switched temporal resolution from 1 hour to 6 hours and fed the datasets to the MariNet model, PhyDNet and FourCastNet.

In comparison with the other mentiones ML models, the RMSE and bias of the MariNet model are significantly lower. At the same time, the mean correlations of all three models with the original data are moderate and located between 0.4-0.5.

The above experimental results all show that the MariNet model has great potential in the mid-term predictions of the ocean dynamics. The further development of the model incudes imroving the efficiency of computational operations, expanding the number of parallel running modules of our model to capture more temporal and spatial features of data variability, and increase the number of variables used in training.

Acknowledgments

The study has been conducted using E.U. Copernicus Marine Service Information; <https://doi.org/10.48670/moi-00016>. We would like to acknowledge the use of the GitHub repository <https://github.com/nvlab/fourcastnet> for providing the FourCastNet code,

<https://github.com/vincent-leguen/PhyDNet> for providing the PhyDNet code used in our experiments, and <https://github.com/mlco2/codecarbon> for the CodeCarbon package.

Data and Software Availability Statement

The Operational Mercator global ocean analysis and forecast data for the sea water velocity and the sea surface height used for the ML models training and validation in the study are available on the Copernicus Marine Service Data Store via DOI <https://doi.org/10.48670/moi-00016>. The data may be obtained after on-site registration.

The FourCastNet model is described in (Pathak et al., 2022) and can be obtained via the link <https://github.com/nvmlabs/fourcastnet>. The PhyDNet model (Le Guen & Thome, 2020) is stored in <https://github.com/vincent-leguen/PhyDNet>.

References

- Bjerknes, V. (2023). Meteorology as an exact science. Translation of Die Meteorologie als exacte Wissenschaft. Antrittsvorlesung gehalten am 8. Jan., 1913 in der Aula der Univ, 42, 11–14.
- Bjerknes, Vilhelm. (1903). Das Problem der Wettervorhersage, betrachtet vom Standpunkte der Mechanik und der Physik. *Meteorologische Zeitschrift, Wien*, 21.
- Bryan, K. (1969). Climate and the ocean circulation: III. The ocean model. *Monthly Weather Review*, 97, 806–827. [https://doi.org/10.1175/1520-0493\(1969\)097<0806:CATOC>2.3.CO;2](https://doi.org/10.1175/1520-0493(1969)097<0806:CATOC>2.3.CO;2)
- Buinyi, A., Zhdanova, E., Evdokimov, A., & Sukhikh, N. (2022). On the Artificial Intelligence for the Sea State Forecast Along the Northern Sea Route. *International Journal of Offshore and Polar Engineering*, 32(4), 411–417. <https://doi.org/10.17736/ijope.2022.jc870>
- Buinyi, A., Irishev, D., Nikulin, E., Evdokimov, A., & Sukhikh, N. (2023). On the Machine Learning Experience for the Ocean Circulation Modeling and Forecast in the Arctic Ocean. <https://doi.org/10.13140/RG.2.2.23386.31686>

- Chen, C., Gao, G., Qi, J., Proshutinsky, A., Beardsley, R. C., Kowalik, Z., et al. (2009). A new high-resolution unstructured grid finite volume Arctic Ocean model (AO-FVCOM): An application for tidal studies. *Journal of Geophysical Research*, *114*(C8), C08017. <https://doi.org/10.1029/2008JC004941>
- Dong, C., Xu, G., Han, G., Bethel, B. J., Xie, W., & Zhou, S. (2022). Recent Developments in Artificial Intelligence in Oceanography. *Ocean-Land-Atmosphere Research*. Retrieved from <https://api.semanticscholar.org/CorpusID:253322467>
- Dosovitskiy, A., Beyer, L., Kolesnikov, A., Weissenborn, D., Zhai, X., Unterthiner, T., et al. (2021). An Image is Worth 16x16 Words: Transformers for Image Recognition at Scale.
- Du, Y., Song, W., He, Q., Huang, D., Liotta, A., & Su, C. (2019). Deep learning with multi-scale feature fusion in remote sensing for automatic oceanic eddy detection. *Information Fusion*, *49*, 89–99. <https://doi.org/10.1016/j.inffus.2018.09.006>
- Duo, Z., Wang, W., & Wang, H. (2019). Oceanic Mesoscale Eddy Detection Method Based on Deep Learning. *Remote Sensing*, *11*(16), 1921. <https://doi.org/10.3390/rs11161921>
- Fan, S., Xiao, N., & Dong, S. (2020). A novel model to predict significant wave height based on long short-term memory network. *Ocean Engineering*, *205*, 107298. <https://doi.org/10.1016/j.oceaneng.2020.107298>
- Franz, K., Roscher, R., Milioto, A., Wenzel, S., & Kusche, J. (2018). Ocean Eddy Identification and Tracking Using Neural Networks. In *IGARSS 2018 - 2018 IEEE International Geoscience and Remote Sensing Symposium* (pp. 6887–6890). Valencia, Spain: IEEE. <https://doi.org/10.1109/IGARSS.2018.8519261>
- Fuentes, A. G., Nicolis, O., Peralta, B., & Chiodi, M. (2021). ConvLSTM Neural Networks for seismic event prediction in Chile. In *2021 IEEE XXVIII International Conference on*

Electronics, Electrical Engineering and Computing (INTERCON) (pp. 1–4). Lima, Peru: IEEE. <https://doi.org/10.1109/INTERCON52678.2021.9532946>

Gao, S., Huang, J., Li, Y., Liu, G., Bi, F., & Bai, Z. (2021). A forecasting model for wave heights based on a long short-term memory neural network. *Acta Oceanologica Sinica*, 40(1), 62–69. <https://doi.org/10.1007/s13131-020-1680-3>

Guibas, J., Mardani, M., Li, Z.-Y., Tao, A., Anandkumar, A., & Catanzaro, B. (2021). Adaptive Fourier Neural Operators: Efficient Token Mixers for Transformers. *ArXiv*. Retrieved from <https://www.semanticscholar.org/paper/Adaptive-Fourier-Neural-Operators%3A-Efficient-Token-Guibas-Mardani/427fe0e6e2e2d6f927c62e80c75706e02c2a747f>

Halley, E. (1686). An historical account of the trade winds, and monsoons, observable in the seas between and near the Tropicks, with an attempt to assign the physical cause of the said winds. *Philosophical Transactions of the Royal Society of London*, 16(183), 153–168. <https://doi.org/10.1098/rstl.1686.0026>

Le Guen, V., & Thome, N. (2020). Disentangling Physical Dynamics From Unknown Factors for Unsupervised Video Prediction. In *2020 IEEE/CVF Conference on Computer Vision and Pattern Recognition (CVPR)* (pp. 11471–11481). Seattle, WA, USA: IEEE. <https://doi.org/10.1109/CVPR42600.2020.01149>

Lguensat, R., Sun, M., Fablet, R., Tandeo, P., Mason, E., & Chen, G. (2018). EddyNet: A Deep Neural Network For Pixel-Wise Classification of Oceanic Eddies. In *IGARSS 2018 - 2018 IEEE International Geoscience and Remote Sensing Symposium* (pp. 1764–1767). Valencia: IEEE. <https://doi.org/10.1109/IGARSS.2018.8518411>

- Li, Z., Kovachki, N., Azizzadenesheli, K., Liu, B., Bhattacharya, K., Stuart, A., & Anandkumar, A. (2020). Fourier Neural Operator for Parametric Partial Differential Equations (Version 3). <https://doi.org/10.48550/ARXIV.2010.08895>
- Lin, H., Hua, Y., Ma, L., & Chen, L. (2019). Application of ConvLSTM Network in Numerical Temperature Prediction Interpretation. In *Proceedings of the 2019 11th International Conference on Machine Learning and Computing* (pp. 109–113). New York, NY, USA: Association for Computing Machinery. <https://doi.org/10.1145/3318299.3318381>
- Ling, F., Luo, J.-J., Li, Y., Tang, T., Bai, L., Ouyang, W., & Yamagata, T. (2022). Multi-task machine learning improves multi-seasonal prediction of the Indian Ocean Dipole. *Nature Communications*, 13(1), 7681. <https://doi.org/10.1038/s41467-022-35412-0>
- Liu, Q., Zhang, R., Wang, Y., Yan, H., & Hong, M. (2021). Daily prediction of the arctic sea ice concentration using reanalysis data based on a convolutional lstm network. *Journal of Marine Science and Engineering*, 9(3). <https://doi.org/10.3390/jmse9030330>
- Mandal, S., & Prabakaran, N. (2006). Ocean wave forecasting using recurrent neural networks. *Ocean Engineering*, 33(10), 1401–1410. <https://doi.org/10.1016/j.oceaneng.2005.08.007>
- Maury, M. F. (1855). *The physical geography of the sea*. London: Sampson, Low, Son & Co. <https://doi.org/10.5962/bhl.title.102148>
- Moishin, M., Deo, R. C., Prasad, R., Raj, N., & Abdulla, S. (2021). Designing deep-based learning flood forecast model with ConvLSTM hybrid algorithm. *IEEE Access*, 9. <https://doi.org/10.1109/ACCESS.2021.3065939>
- Navier, C. L. M. H. (1822). Mémoire sur les lois mouvement des fluides. *Mem. Acad. Sci. Inst. Fr.*, 6.

- Ning, P., Zhang, C., Zhang, X., & Jiang, X. (2021). Short- to Medium-Term Sea Surface Height Prediction in the Bohai Sea Using an Optimized Simple Recurrent Unit Deep Network. *Frontiers in Marine Science*, 8, 672280. <https://doi.org/10.3389/fmars.2021.672280>
- Pathak, J., Subramanian, S., Harrington, P., Raja, S., Chattopadhyay, A., Mardani, M., et al. (2022). Fourcastnet: A Global Data-Driven High-Resolution Weather Model Using Adaptive Fourier Neural Operators (Version 1). <https://doi.org/10.48550/ARXIV.2202.11214>
- Richardson, L. (1922). *Weather Prediction by Numerical Process. Mathematics of Computation - Math. Comput.* (Vol. 20). <https://doi.org/10.2307/2003575>
- Robinson, A. R. (1983). Overview and Summary of Eddy Science. In Allan R. Robinson (Ed.), *Eddies in Marine Science* (pp. 3–15). Berlin, Heidelberg: Springer Berlin Heidelberg. https://doi.org/10.1007/978-3-642-69003-7_1
- Santana, O., Hernández-Sosa, D., Martz, J., & Smith, R. (2020). Neural Network Training for the Detection and Classification of Oceanic Mesoscale Eddies. *Remote Sensing*, 12(16), 2625. <https://doi.org/10.3390/rs12162625>
- Shi, X., Chen, Z., Wang, H., Yeung, D. Y., Wong, W.-K., & Woo, W. (2015). Convolutional LSTM Network: A Machine Learning Approach for Precipitation Nowcasting. In *NIPS*.
- Song, T., Han, N., Zhu, Y., Li, Z., Li, Y., Li, S., & Peng, S. (2021). Application of deep learning technique to the sea surface height prediction in the South China Sea. *Acta Oceanologica Sinica*, 40(7), 68–76. <https://doi.org/10.1007/s13131-021-1735-0>
- Stokes, G. (1845). On the Theories of the Internal Friction of Fluids in Motion. *Transactions of the Cambridge Philosophical Society*, 8.

- Storto, A., Alvera-Azcárate, A., Balmaseda, M. A., Barth, A., Chevallier, M., Counillon, F., et al. (2019). Ocean Reanalyses: Recent Advances and Unsolved Challenges. *Frontiers in Marine Science*, 6, 418. <https://doi.org/10.3389/fmars.2019.00418>
- Sverdrup, H. U., & Munk, W. H. (1947). Wind, sea and swell : Retrieved from <https://api.semanticscholar.org/CorpusID:132860343>
- Xu, G., Cheng, C., Yang, W., Xie, W., Kong, L., Hang, R., et al. (2019). Oceanic Eddy Identification Using an AI Scheme. *Remote Sensing*, 11(11), 1349. <https://doi.org/10.3390/rs11111349>
- Xu, G., Xie, W., Dong, C., & Gao, X. (2021). Application of Three Deep Learning Schemes Into Oceanic Eddy Detection. *Frontiers in Marine Science*, 8, 672334. <https://doi.org/10.3389/fmars.2021.672334>
- Zhou, S., Bethel, B. J., Sun, W., Zhao, Y., Xie, W., & Dong, C. (2021). Improving Significant Wave Height Forecasts Using a Joint Empirical Mode Decomposition–Long Short-Term Memory Network. *Journal of Marine Science and Engineering*, 9(7), 744. <https://doi.org/10.3390/jmse9070744>
- Zulfa, I. I., Novitasari, D. C. R., Setiawan, F., Fanani, A., & Hafiyusholeh, Moh. (2021). Prediction of Sea Surface Current Velocity and Direction Using LSTM. *IJEIS (Indonesian Journal of Electronics and Instrumentation Systems)*, 11(1), 93. <https://doi.org/10.22146/ijeis.63669>