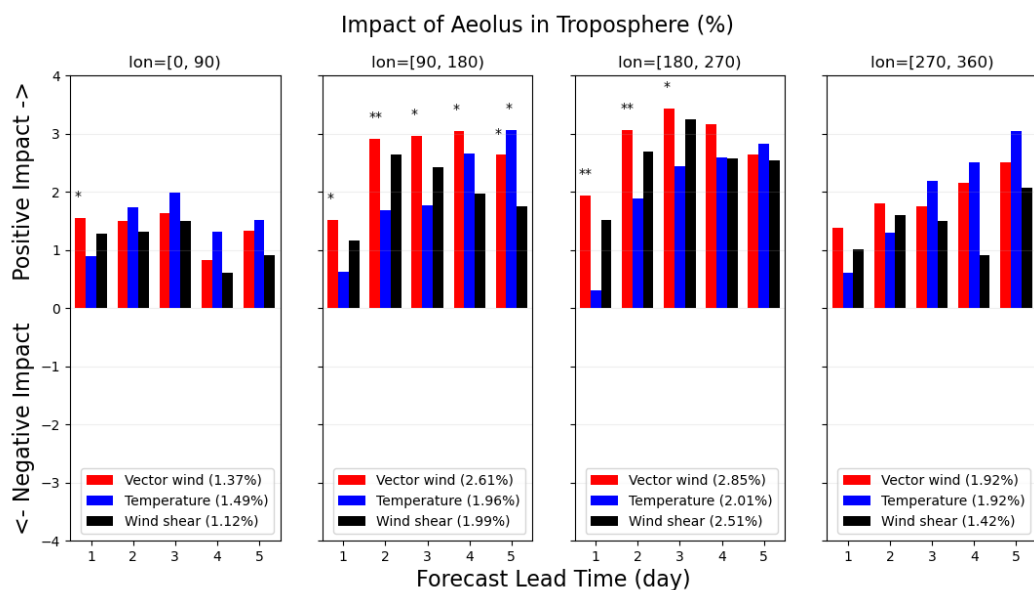
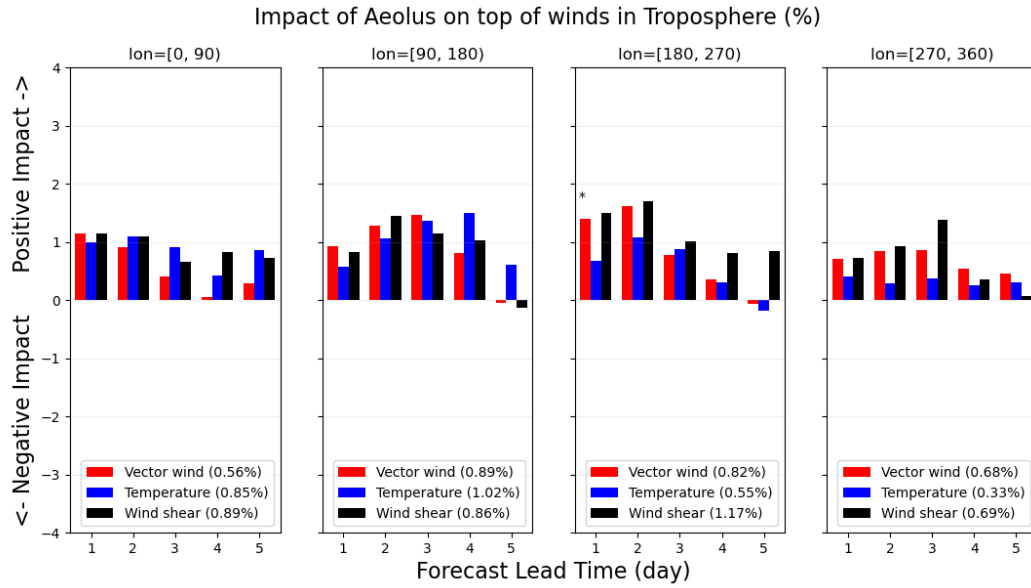


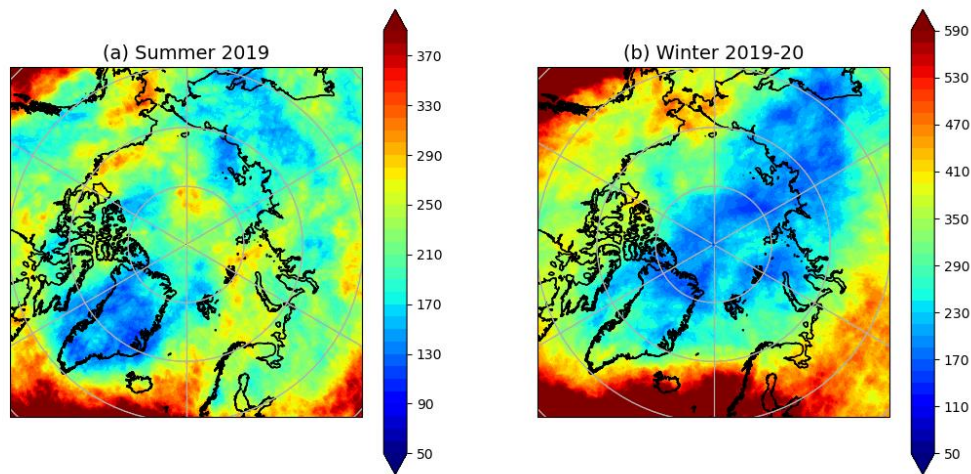
SFigure 1: Similar to Figure 1(a), but for the impact score over subregions over the Arctic.



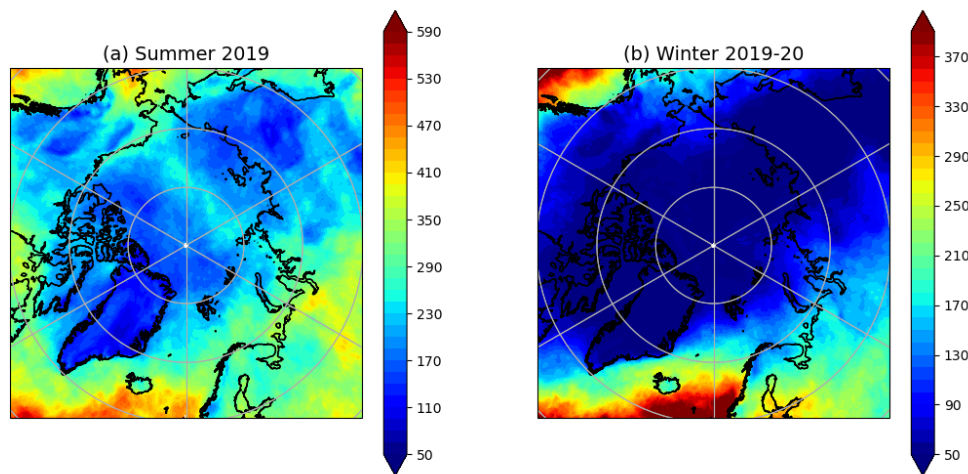
SFigure 2: Similar to Figure 1(b), but for the impact score over subregions over the Arctic.



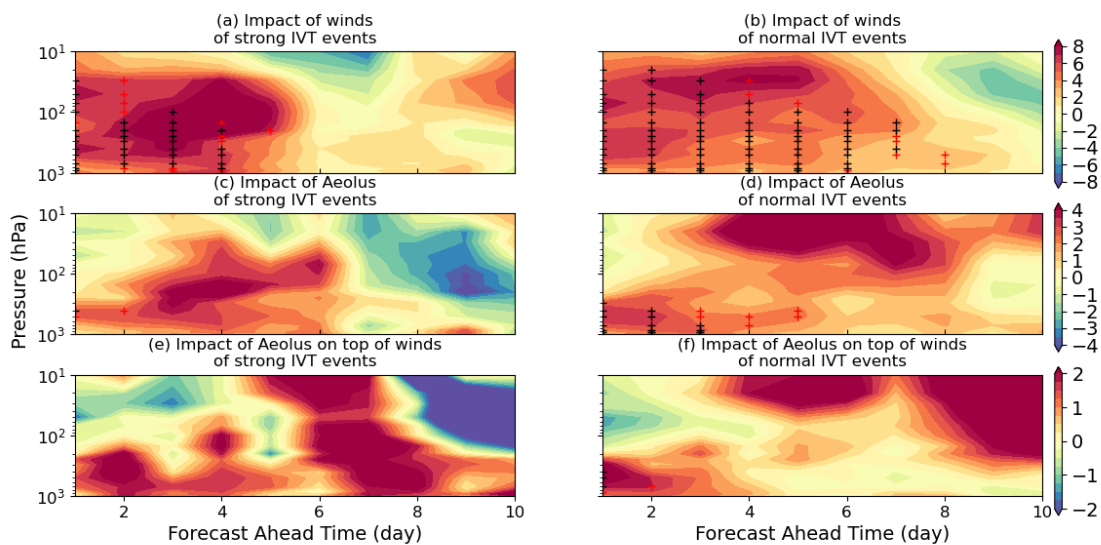
SFigure 3: Similar to Figure 1(c), but for the impact score over subregions over the Arctic.



SFigure 4: An Arctic view of the 90th percentile of the 500-hPa Kinetic Energy (KE500, in m^2/s^2) from ERA5 during (a) Summer 2019 and (b) Winter 2019-20.



SFigure 5: Similar to SFigure 4, but for the 90th percentile of the integrated vapor transport (IVT, in $kg/m \cdot s$).



SFigure 6: Similar to Figure 7, but for impacts of the added wind observations of strong IVT days and normal IVT days.